

QRHA22

32.9~50.1GHz, WR-22

Features:
* Broadband

Applications:
* Wireless
* Transceiver
* Laboratory Test
* Broadcast

Electrical

Frequency: 32.9~50.1GHz
Gain: 15, 20, 25dB
VSWR: 1.3 max.

Mechanical

Interface: WR-22
Flange: UG383/U
Material: Brass

How To Order

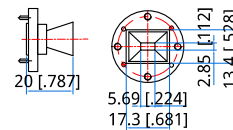
QRHA22-15 - 15dB, Outline A

QRHA22-20 - 20dB, Outline B

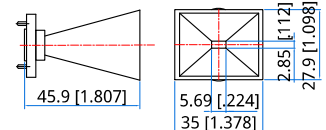
QRHA22-25 - 25dB, Outline C

Customization is available upon request.

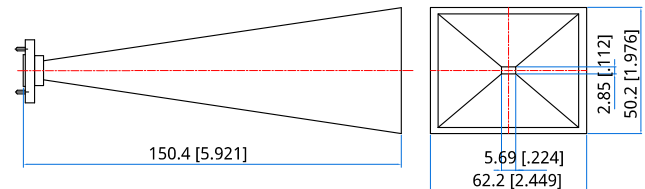
Outline Drawings



Outline A



Outline B



Outline C

Unit: mm [in]

Tolerance: $\pm 0.2\text{mm}$ [$\pm 0.008\text{in}$]